



## Carolina Classic 28 – American Flyer



**Make:** Carolina Classic  
**Model:** 28  
**Length:** 28 ft 5 in  
**Price:** \$ 94,500  
**Year:** 2001  
**Condition:** Used

**Boat Name:** American Flyer  
**Hull Material:** Fiberglass  
**Draft:** 2 ft 6 in  
**Number of Engines:** 2  
**Fuel Type:** Diesel

### American Flyer

---

Perfect Pocket Fisherman 28 Carolina Classic with 500 hours on Cummins Diesels, has entered the market. Owned by a very knowledgeable, multiple boat owner. The boat has a tower

---

and second station . Fresh electronics and forward Cuddy Cabin for overnight boating adventures. Please contact the listing broker for showing instructions and more information.

## Measurements

---

Cruising Speed:	30 mph	Displacement:	15000 lb
Cruising Speed RPM:	3200		
Max Speed:	37.2 mph	Deadrise at Transom:	24 °
Max Speed RPM:	3800	Fuel Tanks Capacity:	290 gal
LOA:	28 ft	Fresh Water Tanks Capacity:	30 gal
Beam:	10 ft 6 in	Number of single berths:	2
Max Draft:	2 ft 6 in	Number of Heads:	1
Cabin Headroom:	6 ft		

## Propulsion

---

### Engine #1

Engine Make:	Cummins	Engine Year:	2001
Primary Engines:	Inboard	Hours:	500
Drive Type:	V Drive	Power:	330 hp
Location:	Port		

### Engine #2

Engine Make:	Cummins	Engine Year:	2001
Primary Engines:	Inboard	Hours:	500
Drive Type:	V Drive	Power:	330 hp
Location:	Starboard		

## Features

---

### Electronics

- Depthsounder
- Plotter
- Radio
- GPS
- Radar
- Autopilot
- Compass
- VHF

## Inside Equipment

- Marine Head
- Battery Charger
- Refrigerator

## Electrical Equipment

- Shore Power Inlet
- Generator

## Manufacturer Provided Description

The following is Manufactures Provided Description and does not precisely reflect the option or features of the listed Vessel.

The 28 is a machine totally designed and precisely built for one purpose: Offshore trophy fishing. Because fishing conditions vary, we offer a combination of twin engine power and drive choices. Gas or diesel. Conventional inboard or jack shaft to stern drive. And long-range fuel capacity for all. Plenty of living room, too. A cabin with six feet of head room. V-berth with filler. Galley with microwave, sink, refrigerator and table. Full walk-in electric head with shower. And storage areas throughout. Best of all is how easy she is to maintain. The dry, over-sized engine compartment provides roomy access to the hydraulics, generator, pumps and batteries. The bilge runs in a tunnel underneath the gel-coated engine room, so all vital mechanics stay dry and clean. The air intakes are high above the sheer to keep corrosive salt spray out. Even the cabin walls are finished gel so they can be easily cleaned and kept free of mildew. The 28 is complete. There's a very short "extras" list. The most popular is the command tower, which encloses the lower helm station and provides a complete second station above.

## Additional Description

Bridge clearance with tower is 12'0". Outriggers and antennas down.

Outriggers

4 new Batteries

Reverse Cycle A/C in cabin

Enclosed Head

V berth

Galley area

All canvas in very good condition

Hydraulic steering

Last Haul out and fresh bottom repaint 5/18

## **Electronics**

---

Garmin 1042 Upper station

Garmin 1242 Lower Station w/ Weather moduel

24 Mile Closed Array Radar

Icom 506 VHF

Fusion Stereo system RA70

## **Engines**

---

Twin 330 HP Cummins Diesel Engines with Approximately 500 hours as of 8/15/18.

Westerbeke 4.0 KW generator 95 Hours as of 8/15/18.

## **Flagler Yachts Disclaimer**

---

The Company offers the details of this vessel in good faith but cannot guarantee or warrant the accuracy of this information nor warrant the condition of the vessel. A buyer should instruct his agents, or his surveyors, to investigate such details as the buyer desires validated. This vessel is offered subject to prior sale, price change, or withdrawal without notice.

# Photos

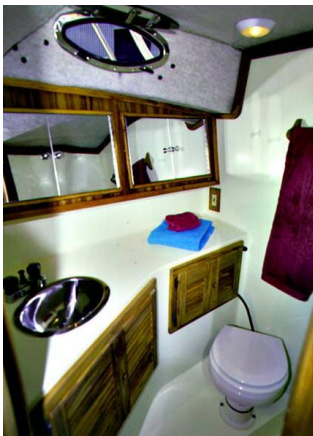
---



Manufacturer Provided Image



Manufacturer Provided Image



Manufacturer Provided Image

